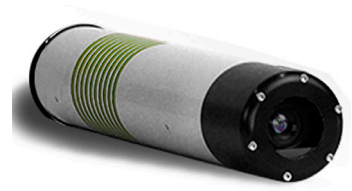


MSV Series

Spectral Cameras

MSV-500

MSV 640

MSV-101W

FEATURES
Optical Specifications

Wavelength Range	400-1000 nm	400-1700 nm	400-1000 nm
Spatial Resolution	2000	640	780
Spectral Resolution	2.8 nm	8 nm	8 nm (@50 um slit)
Spectral Resolution (number of pixels)	800	512	580

Electrical Specifications

Power	110/220 VAC (External adapter)	110/220 VAC	Power Over Ethernet
Camera Interface	USB 3	GigE	GigE
Maximum Framerate	60 fps	60 fps	60 fps
Dynamic Range	12/16 bits	12 bits	12 bits
Binning	Yes	Yes	Yes

Mechanical Specifications

Dimensions	12.63"(L) x 3.6"(W) x 3.79"(H)	14.2"(L) x 3.6"(W) x 3.79"(H)	8.5"(L) x 2.12"(Dia)
Weight	8.5 lb	9.2 lb	4.8
Environmental Rating	IP52	IP52	IP65

Software

Dual Camera FastFrame™	Yes	No	No
Single Camera FastFrame™	Yes	Yes	Yes
kemoQuant™ Analysis software	Optional	Optional	Optional
kemoQuant™ Visualization software	Optional	Optional	Optional